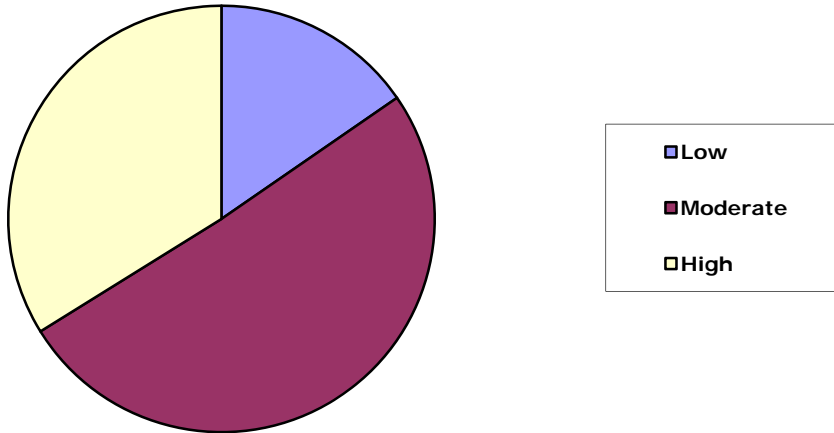


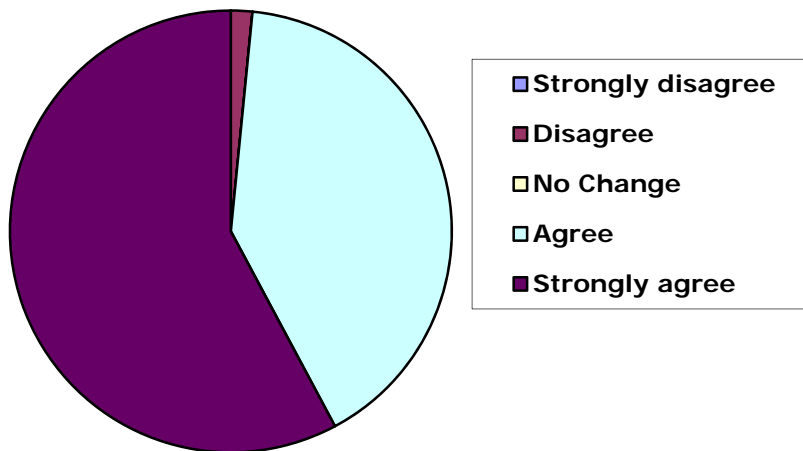
Attendee Survey Results

Adapting to Rising Sea Level – A Florida Perspective
June 25, 2009 – Town of Melbourne Beach Community Center
Space Coast Climate Change Initiative
For more information write us at:
info@spacecoastclimatechange.com

#1: Prior to this forum, my level of knowledge regarding climate change, and especially sea level rise, was

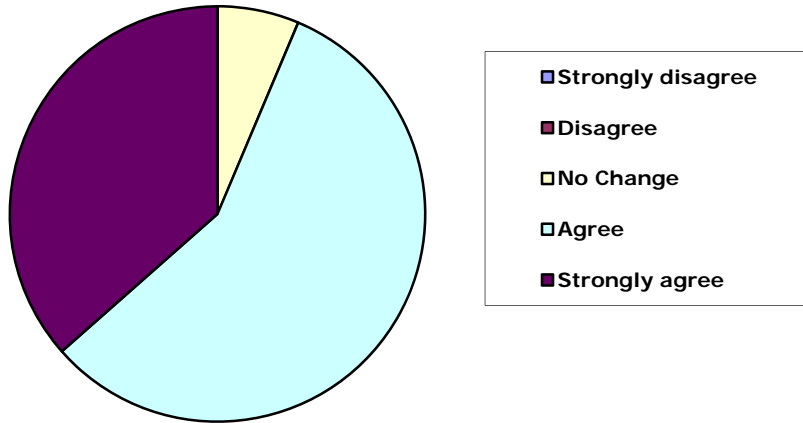


#2: The information provided during this Forum clearly demonstrates sea level rise projections are based upon sound science

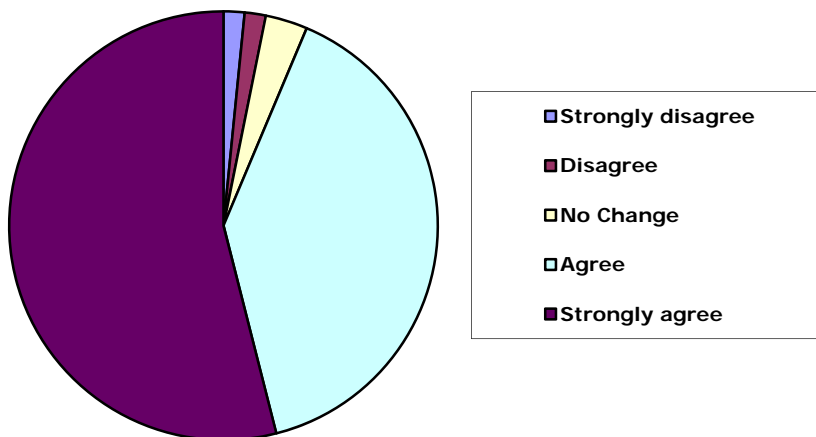


Attendee Survey Results
Adapting to Rising Sea Level – A Florida Perspective
June 25, 2009 – Town of Melbourne Beach Community Center
Space Coast Climate Change Initiative
For more information write us at:
info@spacecoastclimatechange.com

3: The information provided during this Forum has helped me understand how we might adapt to sea-level rise

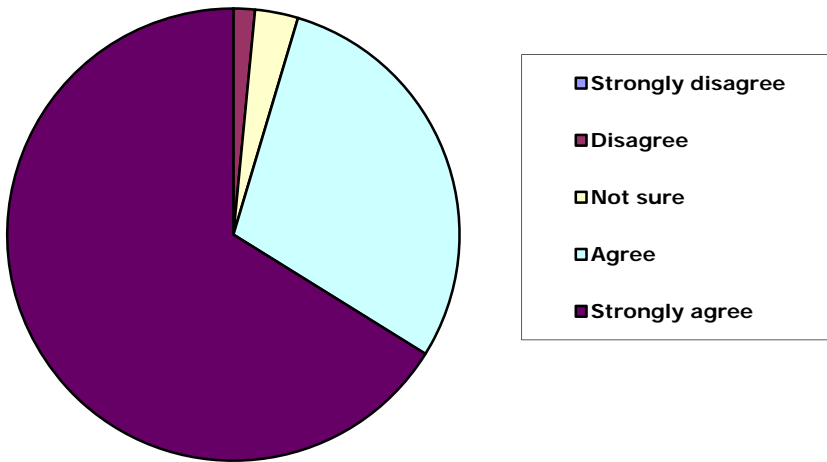


#4: I would support local government actions designed to quantify of the effects of climate change including rising sea level

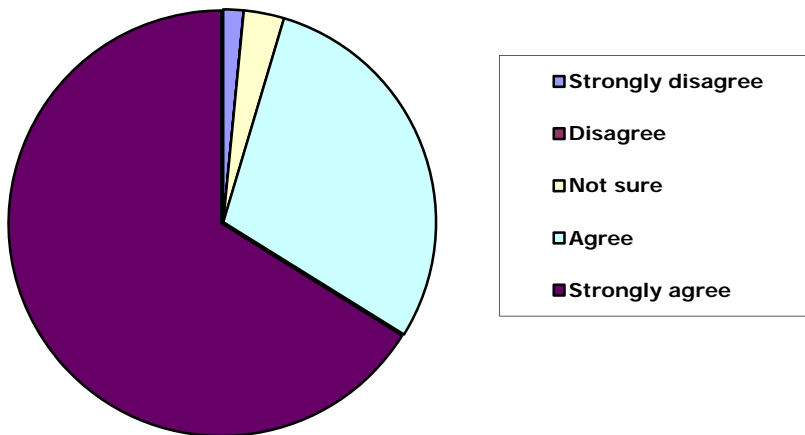


Attendee Survey Results
Adapting to Rising Sea Level – A Florida Perspective
June 25, 2009 – Town of Melbourne Beach Community Center
Space Coast Climate Change Initiative
For more information write us at:
info@spacecoastclimatechange.com

#5: Climate change is real and happening now



#6: Regardless of the cause of climate change and rising sea level, we must take action to minimize its effect on our quality of life



Attendee Survey Results

Adapting to Rising Sea Level – A Florida Perspective
June 25, 2009 – Town of Melbourne Beach Community Center
Space Coast Climate Change Initiative
For more information write us at:
info@spacecoastclimatechange.com

#7: I would support a local "willing seller" program to purchase vulnerable beachfront properties, restore site ecology, and increase public access

